

2009
Aug. 22 - Sept. 4
14 DAYS
\$2399

MOTOR COACH

Price Includes

- Meals - 17
- Hotel Accommodations
- Step On Guides
- Luggage Handling
- All Listed Attractions

**CALL FOR A
 DETAILED
 COLOR PICTURE
 ITINERARY!**



Mackinaw, Sault Ste. Marie, Minnesota, Around Lake Michigan & Lake Superior



IOWA

- **Birthplace of John Wayne, Winterset, IA** - This modest four-room home has been restored to reflect its appearance in 1907, the year of the Duke's birth.
- **Des Moines (1 Night)**
- **Big game trophy exhibit**
- **Buddy Holly Crash Site and Surf Ballroom (February 2, 1959)**

MINNESOTA

- **Alberta Lea, MN (1 Night)**
- **Cabela's** - In addition to offering quality outdoor merchandise, the 150,000 sq. ft. showroom is an educational and entertainment attraction.
- **Bloomington, MN (1 Night)**
- **Mall of America** - This is one of the most visited tourist destinations in the world. With 520 stores, 50 restaurants and attractions such as the nation's largest indoor amusement park and the largest underground aquarium in the country, you will have the time of your life. Plus, there is no sales tax on shoes or clothing!
- **Minneapolis/St. Paul, MN** - Referred to as the "Twin Cities", it is the fifteenth largest metropolitan area in the U.S. Enjoy a city tour with step-on guide and see sites such as the State Capitol and the new bridge.
- **Duluth, MN** - In Duluth, we will have a **city tour** with a step-on guide and the opportunity to shop and dine by the water. Considered a seaport city, it is located at the westernmost point on the north shore of Lake Superior.
- **Lake Superior - Motor coach all the way around the lake.**
- **Split Rock Lighthouse** - Completed in 1910, it was soon one of Minnesota's best known landmarks.
- **Grand Marais, MN** - Eat and shop in this unique little town by the water.

CANADA

- **Thunder Bay, Ontario (1 Night)**
- **Tour Fort William Historical Park** - The world's largest fur trade post.
- **White River (1 Night)**
- **Sault Ste. Marie, Canada (2 Nights)**
- **Lock Tour** - Discover the locks as ships maneuver from Lake Huron to Lake Superior.
- **Agawa Canyon** - Take a 230 mile round trip dome car train excursion from Sault Ste Marie, Ontario to **Agawa Canyon Park**, a journey you will be talking about for years.

MICHIGAN

- **Mackinac Bridge** - 5 mile suspension bridge over the Straights of Mackinac with 552 ft. towers built to withstand 600 MPH winds.
- **Lake Michigan - Motor coach all the way around the lake** - Savor the scenic beauty of the **Lake Michigan** shoreline!
- **Mackinaw City (2 Nights)** - Treat yourself to the gracious hospitality of the Hamilton Inn Select Beachfront of Mackinaw City.
- **Live Entertainment** - Relax, eat, shop and see a show!!
- **Mackinac Island** - Ferry out to this National Historic Landmark. The American island that has banned motorized vehicles for more than a century remains a living Victorian community. With wonderful attractions, great dining and shopping galore amidst some of the most breathtaking architecture and natural scenery in the world, Mackinac Island offers the traveler an incredible experience. **Experience a horse drawn carriage tour with a visit to the historic Fort Mackinac.**





Immerse yourself in history.



- **Grand Hotel** - Tour a timelessly classic hotel on Mackinac Island. **Dine at a 100 foot buffet line and sit on a 600 foot long porch**, the longest in the world! The Grand Hotel was the setting for movie classics *Somewhere in Time* and *A Time For Keeps*.
- **Ft. Mackinac** - Constructed during the American Revolution, within its 14 original buildings, you'll enjoy informative and interactive exhibits.
- **Cross in the Woods** - With the largest crucifix in the world, it has become one of the most famous and most frequently visited shrines in Michigan. The highlight of the shrine is a large wooden cross and bronze figure of Christ.
- **Frankenmuth (The Christmas City) 1 Night** - Frankenmuth is one of Michigan's biggest tourist attractions. It's considered "Michigan's Little Bavaria".
- **Bronner's Christmas Wonderland**. Bronner's is billed as the world's largest Christmas Store. Home to over 50,000 gifts and trimmings for all seasons and reasons.
- **Zehnder's** - Arrive at Zehnder's for a famous chicken dinner with all the trimmings.
- Travel through **Saginaw, Flint, and Kalamazoo**.
- **State Capitol, Lansing, MI** - Free time to walk around the national historic landmark.
- **The Gerald R. Ford Museum, Grand Rapids, MI** - Located in Gerald Ford's hometown and the congressional district he represented from 1949-73, visitors are allowed to participate in history, not just view it, while reviewing the high-lights of the lives of President and Mrs. Ford.

- **Frederik Meijer Gardens & Sculpture Park** - Discover the beauty and splendor of this spectacular botanic garden and world-class sculpture park.

INDIANA

- **Notre Dame** - Founded in 1842, is an independent, national Catholic university located in Notre Dame, Indiana. Admission to the University is highly competitive, with five applicants for each freshman class position.
- **Amish Acres, Nappanee, IN (1 Night)** - Embrace the Pace of this peaceful place. Come for the Amish cooking, baking, and shopping you won't want to miss. Enjoy a nationally famous Threshers Dinner and then see a play in the Round Barn Theatre.
- **Auburn Cord Duesenburg Museum** - A national historic landmark dedicated to preserving cars built by Auburn Automobile, Cord Automobile & Duesenburg.
- **James Dean Gallery and Memorial Park** - "Where cool was born." Tour the museum and hometown, and visit the gravesite of James Dean.
- **Ft. Wayne (1 Night)**
- **Indianapolis, Terre Haute**

MISSOURI

- **St. Louis - (1 Night)**
- **Union Station** - A marketplace with more than 100 specialty shops and restaurants, nightclubs, and a hotel, as well as entertainment areas, plazas, and a 1 1/2-acre lake.



Pricing Information

Price based on double occupancy.
Call for single or 3 to 4 people occupancy rates.

Insurance:

Optional Trip Cancellation/
Interruption Insurance
For rates, see page 44

Payments:

Deposit Due on receipt of deposit letter: \$100

- Balance Due:
6-8 weeks before departure
Final payment is due upon receipt of final invoice, itinerary and luggage tags.

IMPORTANT - Passport Needed

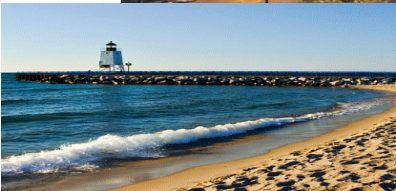
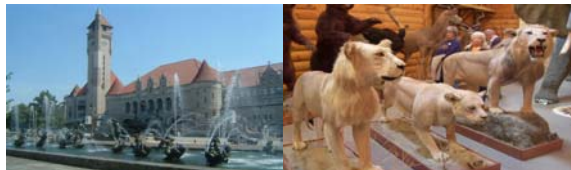
If you already have your passport, it must be valid for 6 months past the completion of your trip.

TRAVEL For LESS

When you bring friends & family to share your room!

For information & reservations:

(316) 838-0795
(800) 499-9162





Mackinaw, Sault Ste. Marie, Minnesota, Around Lake Michigan & Lake Superior

August 22 - September 4, 2009

14 Days

Motor Coach



JIM & CINDY'S TOURS, LLC

3227 N. TEE TIME
WICHITA, KS 67205

316-838-0795

800-499-9162

info@jctours.com www.jctours.com

Immerse yourself in history...

Iowa

Birthplace of John Wayne, Winterset, IA - This modest four-room home has been restored to reflect its appearance in 1907, the year of the Duke's birth.

Des Moines (1 Night)

Big game trophy exhibit, Glidden, IA

Buddy Holly Crash Site and Surf Ballroom, Clear Lake, IA



Minnesota

Alberta Lea, MN (1 Night)

Cabela's, Owatonna, MN - In addition to offering quality outdoor merchandise, the 150,000 sq. ft. showroom is an educational and entertainment attraction,



Minneapolis/St. Paul, MN - Referred to as the "Twin Cities", it is the fifteenth largest metropolitan area in the U.S. Enjoy a city tour with step-on guide and see sites such as the State Capital and the new bridge.

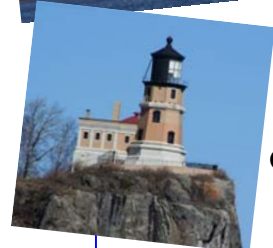


Mall of America, Bloomington, MN (1 Night)- This is one of the most visited tourist destinations in the world. With 520 stores, 50 restaurants and attractions such as the nation's largest indoor amusement park and the largest underground aquarium in the country, you will have the time of your life. Plus, there is no sales tax on shoes or clothing!



Duluth, MN - In Duluth, we will have **city tour** with a step-on guide and the opportunity to shop and dine by the water. Considered a seaport city, it is located at the westernmost point on the north shore of Lake Superior.

Lake Superior - Motor coach all the way around the lake.



Split Rock Lighthouse - Completed by in 1910, it was soon one of Minnesota's best known landmarks.

Grand Marais, MN - Eat and shop in this unique little town by the water.



Canada

Thunder Bay, Ontario (1 Night) - Nestled on the shores of Lake Superior at the base of the Nor'Wester Mountains, the City by the Bay is the largest community on Lake Superior.



Fort William Historical Park - Tour the world's largest fur trade post. It is a Canadian historical site located in Thunder Bay, Ontario, that contains a reconstruction of the Fort William fur trade post as it existed in 1815. Known as a living history site, where reconstructed buildings and costumed historical interpreters recreate Fort William.



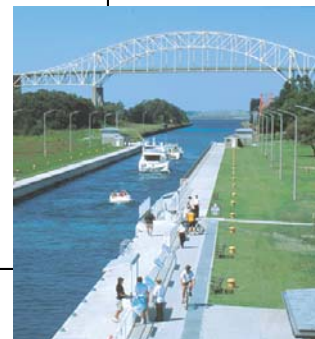
White River - It was originally set up as a rail town, it was finally made accessible by car in 1961. The forest industry is the largest employer, exploiting native timber such as white spruce, black spruce, balsam fir, jack pine, white birch, aspen, and balsam poplar. The township is perhaps best known for being the home of **Winnie the Pooh**.



Marathon, Ontario (1 Night)

Sault Ste. Marie (2 Nights) - Nicknamed "the Sault" or "the Soo", Sault Ste. Marie is a city on the St. Mary's River in Ontario, Canada. *Sault* is pronounced like *sue*. Residents of the city are called *Saultites*. To the south, across the river, is the United States and the city of Sault Ste. Marie, Michigan. The two cities are joined by the International Bridge.

The city has a fascinating history, dozens of museums and historical sites. There are many parks and green-space along the city's rivers and canals with a variety of activities for everyone. We spend two nights in Sault St. Marie, with plenty of time to look in the shops.



Lock Tour - Discover the locks as ships maneuver from Lake Huron to Lake Superior.

Agawa Canyon - Take a 230 mile round trip dome car train excursion from Sault Ste Marie, Ontario to **Agawa Canyon Park**, a journey you will be talking about for years.



Michigan



Mackinac Bridge

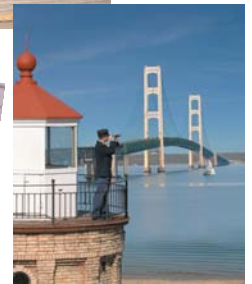
Mackinac Bridge - Travel over this 5 mile suspension bridge over the Straits of Mackinac with 552 ft. towers built to withstand 600 MPH winds. The Mackinac Bridge is the longest suspension bridge in the western hemisphere. The total length of the bridge is 26,372 feet.



Lake Michigan - Motor coach all the way around the lake - Savor the scenic beauty of the Lake Michigan shoreline!

Mackinaw City (2 Nights) - Located at the southern end of the Mackinaw Bridge, this is the most popular tourist city in the state of Michigan. There is so much to do in this fun little city. While there, shop in the quaint little shops and enjoy live entertainment at **Mackinaw Crossings & Center Stage Theatre**, northern Michigan's premier shopping, dining and entertainment destination!

For two nights, treat yourself to the gracious hospitality of the **Hamilton Inn Select Beachfront** of Mackinaw City.



Cross in the Woods - With the largest crucifix in the world, it has become one of the most famous and most frequently visited shrines in Michigan. The highlight of the shrine is a large wooden cross and bronze figure of Christ.



Mackinac Island - Ferry out to this National Historic Landmark. Horse drawn carriage tour with a visit to the historic fort. The American island that has banned motorized vehicles for more than a century remains a living Victorian community. With wonderful attractions, great dining and shopping galore amidst some of the most breathtaking architecture and natural scenery in the world, Mackinac Island offers the traveler an incredible experience.



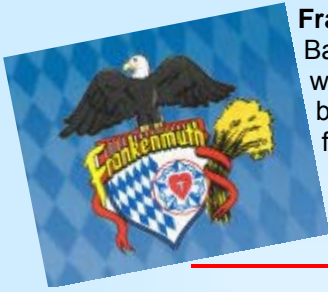
Grand Hotel - Tour and eat lunch at a timelessly classic hotel on Mackinac Island. Dine at a 100 foot buffet line and sit on a 600 foot long porch, the longest in the world! The Grand Hotel was the setting for movie classics *Somewhere in Time* and *A Time For Keeps*.



Fort Mackinac - Constructed by the British during the American Revolution, Fort Mackinac served as an imposing sentinel in the Straits of Mackinac for 115 years.

Within its 14 original buildings, you'll enjoy informative and interactive exhibits, and a Victorian-themed museum store. Outside, the 1880s soldier interpreters play concerts of military music, fire rifles on the parade ground, and deliver a cannon salute over the harbor.





Frankenmuth - The Christmas City (1 Night) - "Michigan's Little Bavaria". Regardless of the time of year, the festivities are always in full bloom. Whether you come for a chicken dinner, to buy a special ornament, attend one of Frankenmuth's many festivals or to simply see what's new, Frankenmuth welcomes you with its flower-lined streets and Bavarian hospitality. We will unwind at the **Springhill Suites by Marriott**.



Bronner's Christmas Wonderland. Bronner's is billed as the world's largest Christmas Store. Open 361 days and located on 28 acres, every square foot of the store appears to be jammed with Christmas trees, wreaths, animated display figures, ornaments, tinsel, twinkling lights, figurines, Santa Claus suits and more. This truly is the Christmas City!



Zehnder's - Arrive at Zehnder's for a famous chicken dinner with all the trimmings. Dinner is a must at America's largest family owned restaurant-Zehnder's of Frankenmuth. This restaurant is the heart of Midwestern hospitality. In its ten dining rooms, which can seat more than 1,500 guests. Each year, Zehnder's serves nearly a million guests with the superb hospitality that has made it a world-wide attraction.

Travel through Saginaw, Flint, and Kalamazoo



State Capital, Lansing, MI - Free time to walk around the national historic landmark.

The Gerald R. Ford Museum, Grand Rapids, MI - Located in Gerald Ford's hometown and the congressional district he represented from 1949-73, visitors are allowed to participate in history, not just view it, while reviewing the highlights of the lives of President and Mrs. Ford.



Frederik Meijer Gardens & Sculpture Park - Discover the beauty and splendor of this spectacular botanic garden and world-class sculpture park.

Indiana



Notre Dame - Founded in 1842, Notre Dame is an independent, national Catholic university located in Notre Dame, Indiana. Admission to the University is highly competitive, with five applicants for each freshman class position.

Amish Acres, Nappanee, IN (1 Night) - Embrace the Pace of this peaceful place. Come for the Amish cooking, baking, and shopping you won't want to miss. Enjoy a nationally famous Threshers Dinner and then see a play in the Round Barn Theatre.



Auburn Cord Duesenburg Museum - A national historic landmark dedicated to preserving cars built by Auburn Automobile, Cord Automobile & Duesenburg.

James Dean Gallery and Memorial Park - "Where cool was born." Tour the museum and hometown, and visit the gravesite of James Dean.



Also enjoy travels through, **Fort Wayne (1 Night), Indianapolis, & Terre Haute!**



Missouri

Union Station (1 Night) - A marketplace with more than 100 specialty shops and restaurants, nightclubs, and a hotel, as well as entertainment areas, plazas, and a 1 1/2-acre lake.



Travel Guard Essential - Expanded								
Trip Cost Per Person:	AGE							
	0-34	35-59	60-69	70-74	75-79	80-84	85+	
\$0*	\$14	\$21	\$27	\$31	\$46	\$57	\$67	
\$1-\$500	\$20	\$30	\$34	\$43	\$51	\$77	\$85	
\$501-\$1,000	\$35	\$44	\$55	\$75	\$96	\$123	\$145	
\$1,001-\$1,500	\$45	\$60	\$75	\$99	\$136	\$161	\$205	
\$1,501-\$2,000	\$61	\$80	\$104	\$142	\$175	\$207	\$263	
\$2,001-\$2,500	\$78	\$100	\$128	\$174	\$214	\$254	\$330	
\$2,501-\$3,000	\$95	\$118	\$154	\$208	\$256	\$297	\$390	
\$3,001-\$3,500	\$111	\$125	\$180	\$242	\$292	\$341	\$447	
\$3,501-\$4,000	\$126	\$137	\$204	\$274	\$332	\$396	\$501	
\$4,001-\$4,500	\$142	\$157	\$260	\$310	\$371	\$459	\$562	
\$4,501-\$5,000	\$158	\$178	\$291	\$346	\$412	\$513	\$619	
\$5,001-\$5,500	\$182	\$210	\$319	\$403	\$451	\$573	\$678	
\$5,501-\$6,000	\$203	\$240	\$347	\$441	\$491	\$632	\$738	
\$6,001-\$6,500	\$220	\$262	\$379	\$479	\$530	\$694	\$795	
\$6,501-\$7,000	\$239	\$284	\$413	\$519	\$573	\$755	\$860	
\$7,001-\$8,000	\$263	\$309	\$462	\$586	\$653	\$847	\$977	
\$8,001-\$9,000	\$295	\$334	\$512	\$654	\$734	\$946	\$1102	
\$9,001-\$10,000	\$328	\$363	\$567	\$723	\$822	\$1044	\$1226	
\$10,001-\$11,000	\$375	\$422	\$642	\$820	\$960	\$1211	\$1421	
\$11,001-\$12,000	\$424	\$477	\$707	\$913	\$1080	\$1363	\$1594	
\$12,001-\$13,000	\$473	\$533	\$766	\$1005	\$1205	\$1517	\$1748	
\$13,001-\$14,000	\$522	\$591	\$834	\$1093	\$1333	\$1678	\$1901	
\$14,001-\$15,000	\$573	\$649	\$905	\$1186	\$1458	\$1850	\$2055	

***Above rates do not include a \$6 service fee, per policy (not per individual). Please include this service fee with your payment. These are just a few highlights of the policy. For additional coverage information, call Jim & Cindy's Tours.**

Travel Guard Essential Expanded Coverage™ Protection Plan is an affordable package plan for travelers who want our basic coverage and Travel Guard's exclusive 24-hour emergency travel services.

- Coverage for pre-existing medical conditions that could eventually cause you to cancel or interrupt your trip. This includes you and your immediate family members.
- Coverage for a terrorist incident in a city listed on your itinerary within 30 days of your scheduled arrival.
- Flight Guard: This addition of \$25,000 will cover you in the event of loss of life while you are traveling in the air.
- Trip cancellation Interruption and delay
- Emergency medical treatment or evacuation
- Lost, stolen or damaged baggage or personal effects
- Baggage delay
- Coverage for financial default of an airline, a cruise line or tour operator. (Financial default is not covered for all travel suppliers.)

Around Lake Superior, & Lake Michigan, Minnesota, Mackinaw, & Sault St. Marie

Cost: \$ **2399** per person based on double occupancy
 \$ **3139** single rate
 \$ **2189** triple rate
 \$ **2079** quad rate

PAYMENT SCHEDULE INFORMATION

3-6 weeks before departure, you will receive a final invoice, itinerary and luggage tags. Final payment is due when you receive this information.

Please note: In these fast paced times with currency values, fuel prices and other expenses constantly changing, we reserve the right to change trip prices and itineraries. We try to include all of your costs, but sometimes we have surprise expenses charged to us that we can not absorb.

Please return this portion with your deposit to: Jim & Cindy's Tours / 3227 N. Tee Time / Wichita, KS 67205
Yes, I want to go on this fabulous trip to Michigan, Minnesota, Mackinaw & Sault Ste. Marie!

Name: _____ (as you want on your badge) **Date of Birth:** _____
Name: _____ (as you want on your badge) **Date of Birth:** _____
Date of Birth needed for insurance
Address: _____ **City:** _____ **State:** _____ **Zip:** _____
Phone: _____ (Home) _____ (Work) _____ (Cell)

Deposit Required with Reservation

\$ 100 per person x _____ persons = Deposit Paid \$ _____
Optional Insurance: (** see note below) Insurance Paid \$ _____

TRAVEL INSURANCE WAIVER – Please read carefully!

We believe that your upcoming trip is a significant investment which you should protect. For this reason, we strongly recommend you purchase travel insurance. We recommend TRAVEL GUARD®'s comprehensive travel insurance. If you choose to decline this valuable protection, you are assuming any financial loss associated with your travel arrangements.

YES, I choose to purchase travel insurance **NAME:** _____
 NO, I decline to purchase travel insurance. **DATE:** _____

* We highly recommend that your purchase trip cancellation/interruption insurance. If cancellation becomes necessary, Jim & Cindy's Tours will refund the money to you that is returned to us from vendors, such as lodging, attractions and so forth. Most vendors will not refund money after a certain deadline. The insurance covers this money that is not refunded. While no one expects to cancel, interrupt a trip, or incur costs due to emergency medical expense or lost luggage, our experience proves these events do occur frequently. This not only includes you, but if a family member is sick and prevents you from going, or you have to return home, it covers that as well. The cost is minimal compared to the rest of your vacation. If the insurance is taken within 15 days of making the initial deposit, all pre-existing medical conditions are waived. You can take out insurance later, but pre-existing conditions will not be covered. *Be sure to check with your health insurance company to make sure you are covered while traveling internationally. If not, you may want to purchase additional coverage through Travel Guard. You are not obligated to buy insurance from us; you may also choose an insurance provider of your choice. Make sure you know what you are getting if you choose an alternative insurance.*

Please send me more information about these upcoming trips (check as many as you wish):

Feb. 7–Mar. 5, 2009 / Antarctica/South America Cruise Tour	March 13-16, 2009 / New York City-Broadway (Fly Trip)
March 26 - 31, 2009 / Washington D.C. (Fly Trip)	May 7-13, 2009 / Chicago
May 27-June 11, 2009 / California	June 21-July 4, 2009 / Alaska Cruise Tour
July 9-19, 2009 / Yellowstone & The Black Hills	July 29-Aug 12, 2009 / Iceland, Norwegian Fjords, & British Isles Cruise Tour
Aug. 22-Sept. 4, 2009 / Mackinaw, Sault Ste Marie, Minnesota, Around Lake Michigan & Lake Superior	Sept. 29 - Oct. 14, 2009 / New England Fall Foliage
Nov. 1-17, 2009 / Holy Land Cruise	