

2010
January 8-17
10 DAYS
\$2899

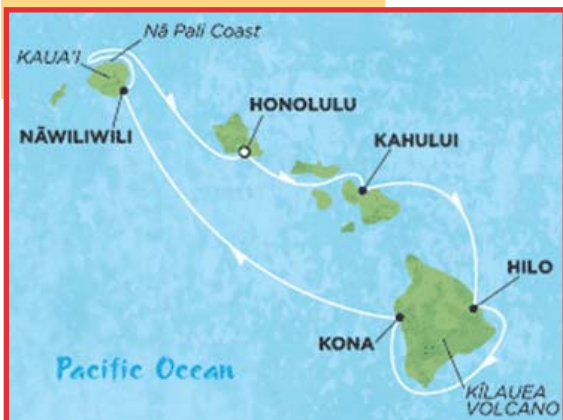
CRUISE

Price Includes

- **Excellent Travel Insurance**
- All Meals, Lodging, and Entertainment Aboard Ship
- Roundtrip Airfare, Air Taxes, and Transfers
- Port Charges & Taxes
- 1 Pre-Cruise Night in Honolulu
- 1 Post-Cruise Day in Honolulu
- Jim & Cindy go with you!

Optional Shore Excursions are not included in the price. We will assist you in booking shore excursions before the cruise to avoid waiting in line on the ship.

CALL FOR A DETAILED COLOR PICTURE ITINERARY OR PRINT ONE FROM THE WEB!
JCTours.com



Hawaii Cruise

Maui ~ O'ahu ~ Kauai ~ Big Island of Hawaii



*Enjoy Hawaii in January...
PLUS, a pre-cruise night in Honolulu*

The Best Way to See Hawaii

Honolulu, O'ahu -

Includes 1 extra day/night at the Marriott Waikiki Beach Hotel
Diamond Head Crater and the glistening Waikiki Beach surround this cosmopolitan city. Within Honolulu's boundaries are lush rainforests, ancient temples, deep sea caves and sacred sites. Visit the hallowed memorials of Punchbowl National Cemetery and **Pearl Harbor**, including USS Arizona. Don't forget to visit the International Market Place!

Kaunaloa, Maui

Maui has two famous dormant volcanoes: **Mount Haleakala**, known as the "House of the Sun," and **Pu'u Kukui** whose caldera has eroded into the scenic **Valley of 'Lao**. Take the spectacular 50-mile **Road to Hana**, relax on your choice of hundreds of pristine beaches, hit the links at the spectacular golf courses of West Maui or enjoy the world-famous Pacific Paradise Lu'au.

Lahaina, Maui -

Optional tour. Rich in history and charm, this city was once the capital of Hawaii and the largest whaling port of the Pacific.

Hilo, Hawaii -

Hilo is on the lush, tropical eastern coast of The Big Hawaii, nestled among old banyan trees and elegant, manicured parks. You can drive along the emerald green **Hilo Hamakue Heritage Coast** to the mystical **Waipi'o Valley** where the rainforest yields wild ginger, towering bamboo and hundreds - foot - high waterfalls crowned by rainbows. Also sail by **Mount Kilauea**.

Sites listed under each island are optional attractions





There is ample time on each island to take shore excursions and enjoy the lush beauty of Hawaii's turquoise waters, white-sand beaches, coral reefs, tropical forests, exotic wildlife and more.

Kona, Hawaii -

On the eastern slopes of the Big Island rests enticing Kona. Here you'll find stark, black moonscapes, cool, fertile fields, steep slopes that grow famous **Kona coffee beans**, macadamia nuts and a profusion of exotic tropical flowers. The Big Island of Hawaii's Gold Coast also offers four world-class golf courses. Take a helicopter ride over the **active volcano** on this island.

Nawiliwili, Kaua'i - A quaint port known as the gateway to this Garden Isle's extravagant beauty. From **Mt. Wai'ale Crater** - which averages over 400 inches of rain per year, to dramatic **Waimea Canyon** - the Grand Canyon of the Pacific, to the plunging cliffs of the **Na Pali Coast**, to the **National Tropical Botanical Gardens**, you'll find an endless array of exotic spots to explore.

Shore Excursions

(not included in tour price)

There are many shore excursions available that offer you the chance to fully experience the spectacular shorelines of Hawaii. You'll want to venture out and explore these amazing islands. Onshore activities include: Hawaiian Luau, Botanical Gardens, Deep Sea Fishing, Eco-Safaris, Helicopter Flight Tours, Historic and Cultural Tours, Horseback Riding, Kayaking and Rafting Adventures, NCL Golfing, Snorkeling and Diving, Sunset Party Sails, and Swimming with the Dolphins, to name a few. Take the opportunity to sample the cultural, historical and scenic highlights of these idyllic islands.



Pride of America® ©2009 NCL CORPORATION LTD. SHIPS REGISTRY: BAHAMAS AND USA Designed to celebrate her arrival as the first new U.S.-flagged cruise ship in nearly 50 years, this vibrant Americana themed ship is full of choices to occupy your time aboard your Freestyle Cruise.



Pricing Information

Trip Price based on inside cabin, double occupancy.
Call for other cabin options, single or 3 to 4 people occupancy rates.

Insurance:

Travel Insurance INCLUDED

Payments:

- Deposit Due on Sign-up Amount based on cabin choice
- Balance Due: 16 weeks before departure

Final payment is due upon receipt of final invoice

Book Early:

Ships can fill months in advance.

TRAVEL FOR LESS

When you bring friends & family to share your room!



For information & reservations:

(316) 838-0795
(800) 499-9162



Hawaií Cruise



JANUARY 8-17, 2010
10 Days

Maui ~ Hilo ~ Kona ~ Kauai ~ Honolulu

*Enjoy Hawaii in January...
PLUS, 1 pre-cruise night in Honolulu*

*Roundtrip Airfare and Travel
Insurance Included*

**Trip is fully escorted by
Jim & Cindy**



JIM & CINDY'S TOURS, LLC

3227 N. TEE TIME

WICHITA, KS 67205

Ph: 316-838-0795

800-499-9162

Email: info@jctours.com

www.jctours.com

You are invited to...

join our group on a 4-Island Hawaii Cruise you will treasure for a lifetime. Share this relaxing and exciting adventure with family and friends. We will be departing from Honolulu with arrivals at the spectacular Maui, breathtaking Kona, stunning Hilo, and the garden island of Kauai.

Dreaming of Hawaii's Paradise

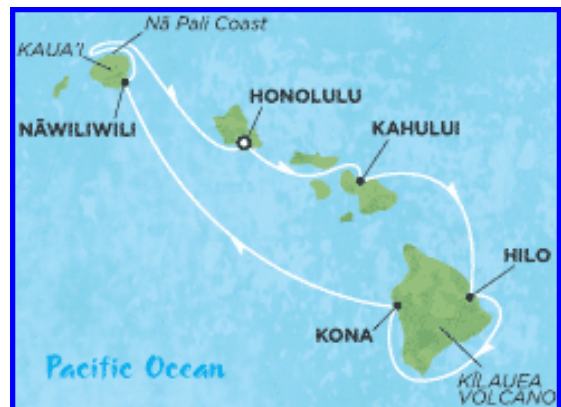
Hawaii is a kaleidoscope of natural beauty, and each island offers a unique and thrilling experience of its own. So which Hawaii Island do you choose? We invite you to experience them all – on one unforgettable vacation.



Cruise Itinerary

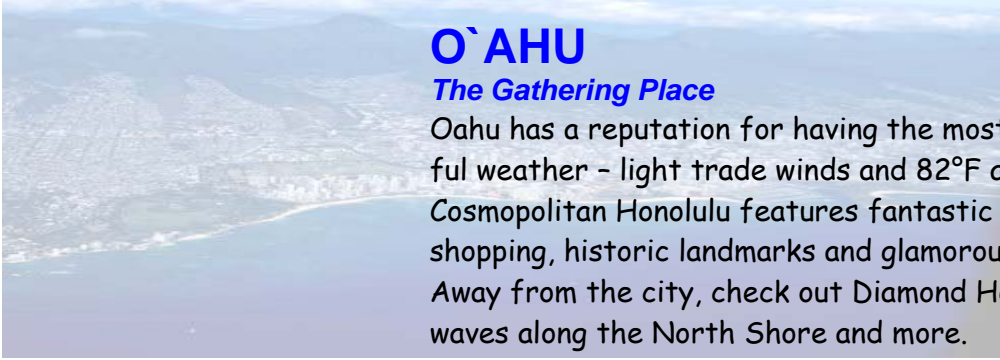
We will be flying to Honolulu a day early and doing a pre-cruise night in Honolulu. Hotel and transfers to ship included.

Day	Port	Arrive	Depart
Sat	Honolulu	-	8:00 PM
Sun Mon	Maui (Kahului)	8:00 AM -	Overnight 6:00 PM
Tue	Hilo	8:00 AM	6:00 PM
Wed	Kona	7:00 AM	6:00 PM
Thu Fri	Kauai	8:00 AM -	Overnight 2:00 PM
Sat	Honolulu	7:00 AM	-



THE HAWAIIAN ISLANDS

*unique * Magnificent * unforgettable.*



O`AHU

The Gathering Place

Oahu has a reputation for having the most consistently beautiful weather - light trade winds and 82°F almost year round. Cosmopolitan Honolulu features fantastic dining, world-class shopping, historic landmarks and glamorous Waikiki Beach. Away from the city, check out Diamond Head, the famous waves along the North Shore and more.

HONOLULU, Oahu - *Where the spirit of aloha begins.*

The state capital, this sophisticated city blends culture with the eco-treasures of Oahu. There are an abundance of historical sites such as **ʻIolani Palace**, America's only royal palace. You'll find a wealth of museums, among them the **Bishop Museum**, the foremost museum of Polynesian culture and anthropology. **Pearl Harbor**, the **USS Arizona Memorial**, the **"Punchbowl" National Cemetery** and the **USS Bowfin Submarine Museum** offer moving insights into twentieth century battles. Join a shore excursion to majestic **Diamond Head crater**, take surfing lessons at **Waikiki** or head to **Pali Lookout** in the **Koʻolau Mountain Range**.



MAUI

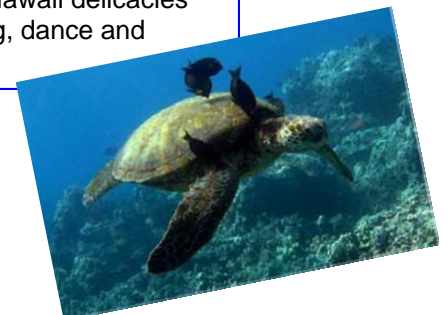
The Valley Isle

This tropical paradise has it all: hundreds of spectacular beaches, cascading waterfalls, voluptuous jungles bursting with color and birdsong, dramatic volcanic craters and small, charming Hawaiian towns. You'll agree - there's nothing on earth quite like it.

MAUI - *A masterpiece of nature*

With over three-quarters of its land uninhabited, Maui is like one giant natural park. Humpback whales, who seem to seek out the world's most beautiful places, make this lovely island their breeding ground. So do spinner dolphins and a multitude of other marine life. Explore Maui's interior, from the peak of **Mt. Haleakala** to the

splendid natural beauty of the sacred **ʻIao Valley**. Drive the winding **Road to Hana** past jungles of ferns, countless waterfalls, underground caves and pristine lagoons. And still there's more, because the cultural life in Maui is vibrant. Don't miss NCL's exclusive **Hoku Nui Lu`au** with its bounteous feasts of Hawaii delicacies and sensational show of song, dance and drama.



LAHAINA, Maui -

Age-old capital of the Hawaiian Kingdom

Nestled on the majestic western coast of Maui, where some of the islands' best beaches can be found, Lahaina is the islands' ancient capital. It is from this busy port that island girls once swam out to greet the whaling ships. Today, this quaint laid-back town is still a playground -- winding along the coast with museums, restaurants and shops. In the harbor, boats cluster waiting to take visitors on sunset cruises in waters teeming with dolphins and other marine life. Nearby, four-mile-long **K'anapali Beach** glitters with grainy gold and bright blue water. Snorkelers and scuba divers will want to head for **Black Rock Beach**, while upcountry Maui unfolds along the breathtakingly scenic Road to Hana.

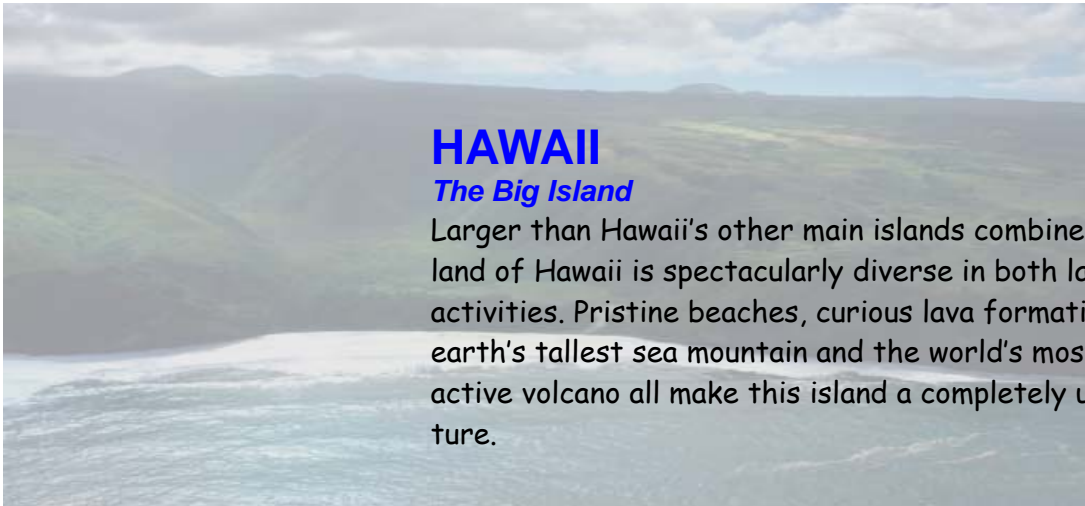


KAHULUI, Maui -

Gateway to the island's sacred `Iao Valley

As Maui's only deepwater port, Kahului is a bustling harbor. Yet just minutes away are some of the island's most scenic spots. Head to the heart of the island and the sacred **`Iao Valley**, where people of the island came to pay homage to the "supreme creator" in a setting of waterfalls, lush foilage, still pools and soaring peaks. Visit a Maui tropical plantation or hit the world-renowned links at nearby **Kapalua**. Whether you choose to kayak along the scenic coasts, drive upcountry or relax on the perfect beach, Maui is magnificent.





HAWAII

The Big Island

Larger than Hawaii's other main islands combined, the Big Island of Hawaii is spectacularly diverse in both landscapes and activities. Pristine beaches, curious lava formations, the earth's tallest sea mountain and the world's most continuously active volcano all make this island a completely unique adventure.

Dominated by the twin peaks of **Mauna Kea** and **Mauna Loa**, both over 13,000 feet high, the **Big Island of Hawaii** is almost twice the size of all the other islands combined. Spectacular white-and black-sand beaches, dramatic cliffs, active volcanoes and even cactus-studded deserts carve the terrain. From the orchid gardens of **Hilo** to the sun-drenched **Kona Coast**, it is a place of many wonders, chief among them **Hawaii Volcanoes National Park**.

HILO

The Big Island of Hawaii - Volcanoes, Lagoons & Lush Valleys

Tropical growth is rampant on Hilo: a giant greenhouse on the leeward side of the Big Island of Hawaii. Waterfalls careen through lush valleys and there are enough flowers to fill a rainbow. Snow-capped **Mauna Kea** presides over it all from a lofty distance. Abandon yourself to the area's more languorous tropical rhythms. Go picnic under a waterfall, watch for migrating whales, explore world-class botanical gardens, golf on the slopes of a volcano, snorkel in pristine waters or find a shady spot and nibble on the chocolate-coated macadamia nuts. Few, though, will want to miss the chance to walk on lava in **Hawaii Volcanoes National Park**.



KONA

The Big Island of Hawaii - Sunny Coast of many treasures

Set on the western coast of the Big Island of Hawaii, Kona is warm and sunny year-round, offering spectacular sunsets, numerous historic sites, abundant wildlife and marine treasures. Kona is a great place to visit the ancient **Hawaiian Place of Refuge**, take a walk in a cloud forest or join a snorkeling excursion to one of the crystal-clear lagoons sheltered by coral reefs where manta rays and rare tropical marine life abound.





KAUAI

The Garden Isle

Kauai offers a different kind of paradise - more low-key and pristine, and somehow more authentic. A Kauai rule states no building can exceed the height of a coconut tree, so the skyline is dominated by swaying palms, majestic mountains and almost daily rainbows. It is also considered the wettest spot on earth averaging more than 460 inches of rain a year. Because of this, Kauai is full of lush, picture-perfect beauty.

KAUAI - An Earthly Garden of Eden

Just one of Kauai's features, the stunning **Na Pali Coast**, would win it the description of paradise. But this island's beauty takes in so much more: **Hanelei Valley, Wai'ale'ale Crater and Waimea Canyon**, are considered the "Grand Canyon of the Pacific." And the wildlife is incredible: rare endangered sea turtles, playful dolphins, moray eels and yellow tangs swimming in protected coves where you can dive and snorkel. This is the island to take that 4-wheel drive mountain safari, soar in a helicopter above the astonishing canyons or golf at Kauai-- and find heaven on earth, your style.



NAWILIWILI, Kauai - Gateway to the Na Pali Coast

The flame-red flowers of the Wiliwili Tree frame this quaint port. Less known is the charming lighthouse, built in 1932, that graces **Nini Point** at the northern end of **Nawiliwili Bay**. Throughout the Garden Isle you'll find an endless array of exotic spots to visit, from rainbow-ringed Waimea Canyon to Hanelei Bay, gateway to the soaring cliffs of the Na Pali coast. Adventure awaits in the form of kayaking, scuba diving, snorkeling, rafting and canoeing. But if you prefer to stay dry, there's horesback riding, biking, golfing and some of the most beautiful walks on earth.





Let freedom ring! **Pride of America** - home of the free. Designed to celebrate her arrival as the first new U.S.-flagged cruise ship in nearly 50 years, this vibrant Americana themed ship is full of choices to occupy your time aboard your Freestyle Cruise. Void of schedules, you'll have ample opportunities to venture about, scoping out the décor, spacious staterooms, regional dishes served in 10 restaurants - or whatever else you feel like doing, and nine lounges for you to kick back and enjoy the journey. Plus, we've got a warm and friendly American crew ready to assist you on your Hawaiian island adventure and make sure your cruise is just that, yours.

Freestyle Cruising...

Whether you are a first-timer or veteran cruiser, once aboard, you can define your own relaxed, hassle-free cruise experience. Dine whenever, wherever and with whomever you want. You can also dine in your cabin. You can wear what you want - resort casual is acceptable.

Amnities Galore (Do Everything or Nothing at All)...

Dining

With up to 10 different restaurants, each featuring a diverse and ever-changing menu, you'll always find exactly what you're in the mood for. Imagine restaurants open from 5:30 pm to midnight so that you can choose from an early dinner before the show or a later romantic dinner for the two of you. And of course there's always the option of 24-hour room service.

Attire

Wear what you want. Dress according to your mood. It is your vacation. "Resort casual" attire is as dressy as you'll ever have to get for dinner. But if it's elegance you're dreaming of, we invite you to indulge. Many of our restaurants offer formal options. If you prefer more casual dress, that's fine, too. How you dress is up to you.

Activities

Pamper yourself with a relaxing massage or revitalized with a workout. Enjoy an evening at the theater for award-winning off-Broadway musicals, plays, jazz groups, magicians, comedians, big bands, and talented singers. You may choose to read a book from the library, play shuffleboard, basketball, volleyball, table tennis, or do aerobics. You'll never be bored!

Eat

- ◆ Cadillac Diner
- ◆ Jefferson's Bistro
- ◆ Lazy J Texas Steakhouse
- ◆ East Meets West
- ◆ Sushi Bar
- ◆ Teppanyaki
- ◆ Little Italy
- ◆ Aloha Cafe
- ◆ Liberty Main Dining Room
- ◆ Skyline Main Dining Room
- ◆ Room Service



Drink

- ◆ Mardi Gras Cabaret Lounge & Nightclub
- ◆ Napa Wine Bar
- ◆ Gold Rush Saloon
- ◆ Pink's Champagne & Cigar Bar
- ◆ John Adam's Coffee Bar
- ◆ Ocean Drive Bar
- ◆ Key West Bar & Grill
- ◆ Waikiki Bar
- ◆ Lanai Bar

Play

- ◆ Gyrosphere
- ◆ Newberry Street Shops
- ◆ South Beach Pool
- ◆ Oasis Pool
- ◆ Hot Tubs
- ◆ Santa Fe Spa
- ◆ Santa Fe Fitness Center
- ◆ Hollywood Theater
- ◆ Jogging/Walking Track
- ◆ Basketball/Volleyball/Tennis Court
- ◆ Golf Driving Net
- ◆ Outdoor Chess
- ◆ SoHo Art Gallery
- ◆ Photo Gallery
- ◆ The Chapel
- ◆ Shuffles Card Room
- ◆ SS America Library
- ◆ LifeStyles Room
- ◆ Internet Center
- ◆ Connections Teen Club
- ◆ Rascals Kid's Club
- ◆ Blast Off Video Arcade



Cabins



Oceanview Stateroom with Balcony (Front & Back of Ship)

Occupancy: Sleeps up to 3 guests (Some sleep 4)

Description: Floor-to-ceiling sliding doors open to your own private balcony. Or enjoy the views from your sitting area or bedroom. Two lower beds convert to a double or queen.

Square Footage: 205 sq ft

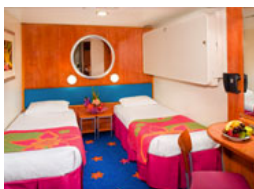


Oceanview Stateroom (Mid-Ship)

Occupancy: Sleeps up to 3 guests (Some sleep 4)

Description: Watch the ever-changing views from your own picture window. Spacious sitting area (in most) and two lower beds that convert to a double or queen.

Square Footage: 160 sq ft



Inside Stateroom (Font and Back of Ship)

Occupancy: Sleeps up to 3 guests (Some sleep 4)

Description: Interior Staterooms do not have a window and feature two lower beds that convert to a double or queen bed, small sitting area, as well as all the standard amenities.

Square Footage: 145 sq ft

Cabin Features:

- ◆ Television
- ◆ Refrigerator
- ◆ Sitting Area
- ◆ Bath Amenities
- ◆ Optional 3rd/4th Bed
- ◆ Mini Bar
- ◆ 24-hr Room Service
- ◆ Safe
- ◆ Duvet
- ◆ Bathroom & Shower
- ◆ Hair Dryer
- ◆ Internet Service
- ◆ Coffee & Tea Setup
- ◆ lower beds that can be arranged as double or queen-size bed

It is important that you book early. The ship may fill 6 or 8 months in advance. CALL US IMMEDIATELY if you are interested so we can get you signed up. THIS IS AN EXTREMELY POPULAR CRUISE.

Price Includes:

Fully escorted by Jim and Cindy Leach of Jim & Cindy's Tours.

Round Trip Coach airfare from Wichita departing January 9, 2009 – returning January 17, 2009

All round trip transfers from airport to ship in Honolulu.

Port charges, government fees / taxes.

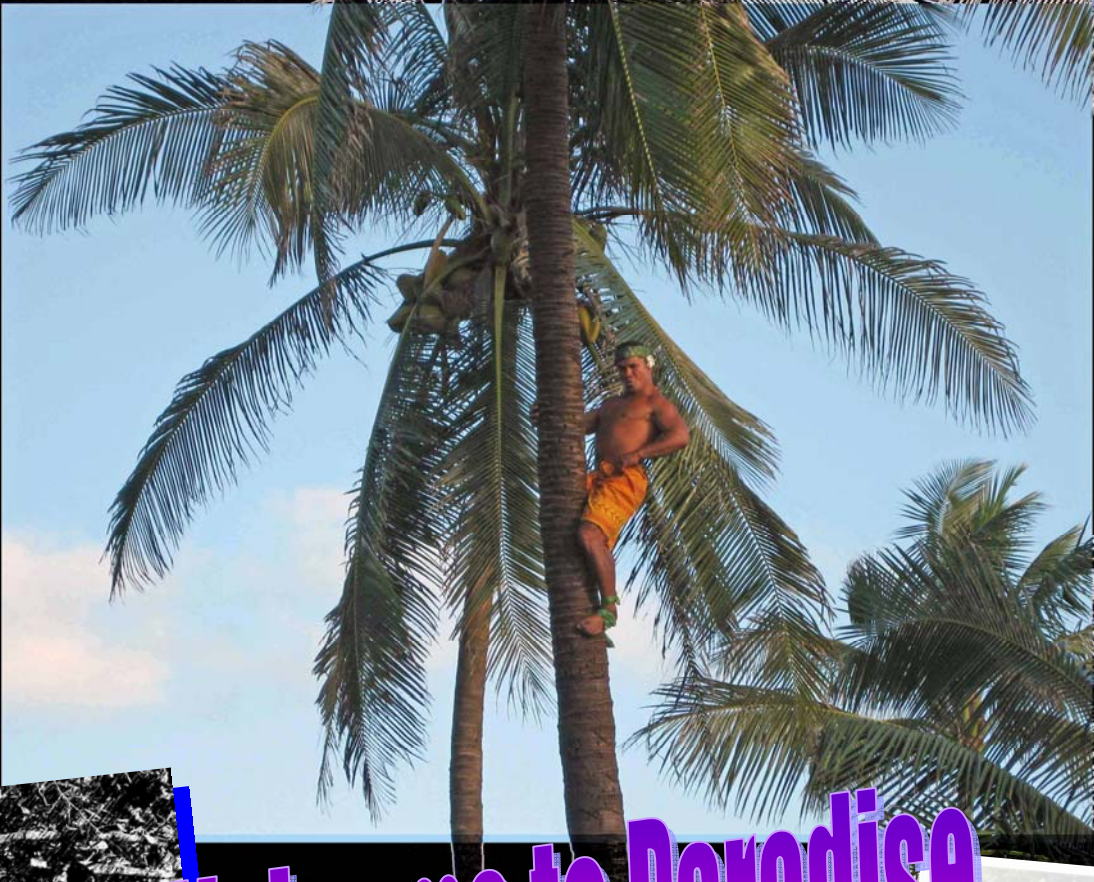
1 pre-cruise night in Hawaii – Hotel and transfer to ship

7-day cruise on the Pride of America (7 nights on the ship).

All food and activities on board ship.

Call Cindy or Judy for, 3rd or 4th passenger prices.

Please note: In these fast paced times with currency values, fuel prices and other expenses constantly changing, we reserve the right to change trip prices and itineraries. We try to include all of your costs, but sometimes we have surprise expenses charged to us that we cannot absorb.



Welcome to Paradise...



*Call us today for reservations!
316-838-0795 or 800-499-9162*