

2010
June 4 - 7
4 DAYS
\$1989
(Est. pending airfare)

FLY TRIP

Price Includes

- Excellent Travel Insurance
- Meals - 1 (Tavern on the Green)
- Hotel Accommodations
- Broadway Shows - 2
- Luggage Handling
- All Listed Attractions
- Roundtrip Airfare & Taxes
- Jim & Cindy go with you!

Sign-up *early*
to get a spot on
this trip!

CALL FOR A DETAILED
COLOR PICTURE
ITINERARY OR PRINT ONE
FROM THE WEB!

JCTours.com



NEW YORK CITY BROADWAY SHOWS



Broadway Show Luxury Trip

Fly to New York City for Broadway Shows and a City Tour.

Roundtrip air from Wichita included.



Three nights in the **Luxury Marriott Marquis** right in **Times Square!** (Limited number of rooms - sign up early!)

The New York Marriott Marquis Hotel, in the Times Square theater district of midtown, is a world-class New York City hotel that is luxury at its finest. The Marquis is within walking distance of the Broadway theater district, Fifth Avenue/Madison Avenue shopping, Radio City Music Hall, Rockefeller Center and NBC studio tours, The Today Show, St. Patrick's Cathedral, and Central Park/Zoo. Also nearby are Carnegie Hall, Lincoln Center, UN, and the Empire State Building.

Tavern on the Green

We will enjoy a meal at the world-famous Tavern on the Green. A grand café overlooking Central Park, Tavern on the Green is one of New York's most dazzling dining experiences, overflowing with crystal chandeliers, hand-carved mirrors, and stained glass. Nestled in its own magical gardens, Tavern on the Green exists in a fantasy-like setting. It is no wonder the critics say, "If Oz had a restaurant, this would be it!"

Broadway Shows

Two shows are included that we will all attend together. You may choose to book other Broadway Shows on your own. We are happy to assist you in booking your additional tickets. Half price tickets are available for some shows by standing in line right by our hotel in Times Square.



NEW YORK CITY

Broadway



June 4 - 7, 2010

4 Days

Fly Trip

*Roundtrip Airfare and Travel
Insurance Included*



JIM & CINDY'S TOURS, LLC

3227 N. TEE TIME

WICHITA, KS 67205

Ph: 316-838-0795 800-499-9162

Email: info@jctours.com www.jctours.com

**Trip is fully escorted by
Jim & Cindy**

Like the song “Come Fly Away,” we want you to come fly away with us to the most fabulous city in the world—New York. This is a luxury trip including Broadway Shows, a City Tour, and stay at the incredible Marriott Marquis Hotel right in Times Square!



The **New York Marriott Marquis Hotel** in Times Square features first-class service in a world-class setting. The Marriott Marquis truly sparkles after a \$150 million renovation, with new rooms, a new high-speed elevator system and newly designed restaurants. The Marquis is within walking distance of the Broadway theater district, Fifth Avenue / Madison Avenue shopping, Radio City Music Hall, Rockefeller Center and NBC studio tours, The Today Show, St. Patrick’s Cathedral, and Central Park/Zoo. Also nearby are Carnegie Hall, Lincoln Center, UN, and the Empire State Building.

The Boathouse Central Park Restaurant
A famous icon of Central Park, this restaurant has recently moved into what was formerly the world-famous Tavern on the Green. We will enjoy a Sunday brunch at this wonderful café overlooking Central Park. It is easy to lose oneself in this magical atmosphere and truly forget you are still in the City.



CITY MOTOR COACH TOUR



Martha & Cindy

Martha, our wonderful step on guide for the last nine years, will show us the sights. Possible sights on our city tour include the following:

Empire State Building,
Macy's Department Store, 5th Avenue, SoHo, Broadway, Chinatown, Little Italy,
Metropolitan Museum of Art, Rockefeller Center, Chrysler Building, Grand Central Station, Madison Square Garden, Wall Street, Penn Central Station, Diamond District, Central Park, Trump Tower, St Patrick's Cathedral, Greenwich Village, Ground Zero, Waldorf Astoria, Bleecker Street, Brooklyn Bridge, South Seaport, United Nations Building, Hard Rock Café, Lincoln Tunnel, Theater District, Times Square, Lincoln Center, Financial District, and other requests you might have.



Empire State Building - A New York City Landmark and a National Historic Landmark, the Empire State Building soars more than a quarter of a mile into the atmosphere above the heart of Manhattan. The building, one of New York City's main tourist attractions, offers a variety of activities for its visitors. One can tour the Observatory 365 days per year, day and night, rain or shine for breathtaking views of Manhattan and beyond.

Macy's Department Store - With ten floors of shopping, several sets of escalators and elevators and even a half-floor here and there, Macy's offers the best in shopping. There is a visitor's guide available at the entrance of Macy's which lists the departments (and even designers) that are available on each floor. This helpful brochure also depicts where the restrooms are and where you can stop to grab something to eat or drink while you venture through this massive store.

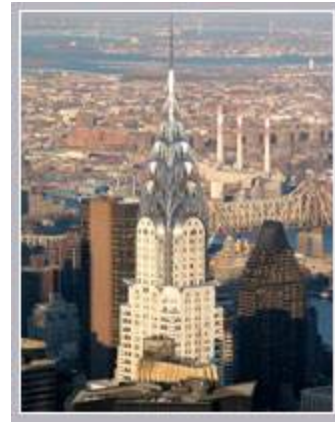
5th Avenue - While most areas of Manhattan have gone in and out of fashion, **5th Avenue** has always meant high-society--from its beginnings as a row of elite townhouses to its current status as a pricey shopping district.

5th Avenue divides most Manhattan streets into East and West--street addresses generally start counting upwards from here in either direction. You won't want to miss out on this shopping extravaganza!



Chrysler Building

The art Deco style **Chrysler Building** was designed to be the corporate headquarters for Walter P. Chrysler and his automobile empire. The building was also in competition against the Manhattan Bank Building for the title of tallest building in the world. The building was designed to resemble a Chrysler automobile. It is faced with Nirossta metal (a chromium - nickel steel), which resembles platinum and is decorated with sculptures copied from the hood ornament of a 1929 Chrysler Plymouth. The 31st floor contains what looks like shiny metal hubcaps. The Chrysler building held the title of the world's tallest building for only a short time. That honor was lost to the Empire State building which was completed only a few months later. Still, the Chrysler building remains the pre-eminent art-deco style building in all of New York City, if not the world.



United Nations

Founded October 24, 1945, the **United Nations** originally had only 51 nation members. The membership has grown to 180 nations - nearly every nation in the world. John D. Rockefeller, Jr. donated the 8.5 million dollars needed to purchase the 18-acre East River site. American architect, Wallace Harrison was enlisted (along with an international board of consultants) to design the buildings. This site is not a part of United States territory. It is an international zone that has its own post office, security, and even postage stamps. The goals of the United Nations are to promote world peace, self-determination, and to aid in economic and social well-being throughout the world.

Shop in Chinatown

Chinatown began as a small community of Chinese immigrants seeking work in the West so that they might send home wages to their families still living in the motherland. By 1940, the area had become home to many middle-class families. During the post-war era, businesses and immigrants from Hong Kong brought new wealth to Chinatown. Today, over 80,000 Asian Americans who trace their roots back to the East call Chinatown their home. The neighborhood is known for its excellent Chinese cuisine, but its highlight is the Eastern States Buddhist Temple. Inside the Temple, visitors will be delighted by the sight of 100 golden Buddha's shimmering in the candlelight. The frequent festivals and parades, as well as the galleries and curio shops create a celebration of Chinese culture that is well worth a visit.



Madison Square Garden

For over 100 years throngs of people have flocked to **Madison Square Garden**, a centerpiece of New York City. Home of the New York Knickerbockers (the Knicks) basketball team and the New York Rangers ice hockey team, the Garden is also host to over 600 events a year. Events include rock concerts, wrestling, championship tennis, the Ringling Bros and Barnum & Bailey Circus, antique shows, dog shows, boxing matches, and countless others. In addition to sports and special events, Madison Square Garden provides convention and office facilities. The facility can seat 20,000 for meetings, conventions or product launches. The convention area is approximately 36,000 square feet.



Stop at *Ellis Island*

From 1892 to 1954, **Ellis Island** was the largest port of entry and inspection to the United States of America. Inspections of passengers arriving from around the globe after frequently arduous sea crossings took place here in the Registry Room (or Great Hall), where doctors inspected every immigrant for signs of illness. Ellis Island is a great place to explore American immigration history, and trace family roots, particularly at the American Immigrant Wall of Honor. Watch the award-winning documentary film *Island of Hope, Island of Tears*, and learn more about the People of America.



Cruise by *The Statue of Liberty* Great Photo Op!

The Statue of Liberty was a gift from the French government for the 100th birthday of America's Independence. It was designed by a young French sculptor, Frederic-Auguste Bartholdi, who was striving to build a statue like the great Colossus that once stood at the Greek island Rhodos. The statue's face was modeled after his mother's and the story goes that the body was modeled after a prostitute. The steel framework was made by Gustave Eiffel, who also built the Eiffel Tower in Paris. It was constructed in France and sent to the USA in 214 pieces. The Statue of Liberty is 46.5 meters high and together with the pedestal it reaches 93 meters.



Walk in *Central Park* (Optional Carriage Ride)

Central Park, the huge park, 843 acres large, is located in the center of Manhattan. Its design is an example for city parks around the world. The park boasts several lakes, theaters, ice rinks, fountains, tennis courts, baseball fields, many playgrounds and other facilities. It is also home to the Central Park Zoo and the Metropolitan Museum of Art. Especially during the weekends, when cars are not allowed into the park, Central Park is a welcome oasis in this hectic city. Central Park is situated in Manhattan between 59th and 110th street and between Fifth and Eight Ave.



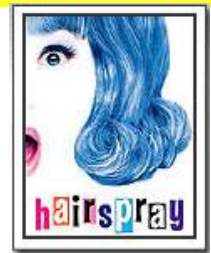
Stop at the *World Trade Center (Ground Zero)*

The twin towers of the **World Trade Center** dominated the skyline of Manhattan Island from the time they were completed in 1973 until that fateful day of September 11, 2001 when two passenger aircraft under the control of terrorist hijackers crashed into the towers. As the world watched, the towers were engulfed in flame until they each collapsed into mountains of rubble and took the lives of nearly 3000 people including 350 brave rescue workers.



BROADWAY SHOWS

Step right this way to purchase your tickets to the most spectacular shows in the Big Apple. **TWO** Broadway shows are included in your trip (*will be announced at a later date*) and time allows you to have the option of choosing two more shows to see. Judy will help you book your tickets. Listed below are *examples* of possible shows—selection may vary.



New York City—Broadway

**TRIP PRICE Includes
Excellent Travel Insurance and Roundtrip Airfare**

TRIP PRICE:

\$ 1989 per person based on double occupancy
\$ 2499 Single
\$ 1898 Triple

****TRIP PRICE: Estimated price pending air booking***

All prices are per person, based on double occupancy and includes travel insurance. If you are traveling as a single or three to a room, please call us for rate adjustments.

Deposit Required with Reservation

\$ 400 per person x _____ persons = Deposit Paid \$ _____

Please return your payment along with your completed INFORMATION form on the next page to our office.

TRAVEL INSURANCE:

We are excited to announce that all of our trips, 4 days or longer, now automatically includes travel insurance!

Because the cost of your trip now includes insurance, in most cases you will be *SAVING* money compared to purchasing an individual policy. In addition to the cost savings, this policy also offers you increased coverage. The insurance still includes all the pre-existing condition waiver for you and your immediate family members.

You will receive a policy certificate prior to our trip departure, but here is a summary of the coverage being provided to you:

<u>COVERAGE</u>	<u>BENEFIT AMOUNT</u>
Trip Cancellation	Trip Cost (Maximum Limit \$25,000 per person)
Trip Interruption	150% of Trip Cost
Trip Interruption-Return Air Only	\$750 or 150% of Trip Cost (whichever is greater)
Missed Connection	\$250
Trip Delay (\$150 max/day)	\$750
Medical Expense	\$50,000
Emergency Medical Transportation	\$250,000
Baggage & Personal Effects	\$1,000
Baggage Delay	\$250
Accidental Death & Dismemberment	\$25,000
Travel Guard Assist	Included
LiveTravel®	Included